

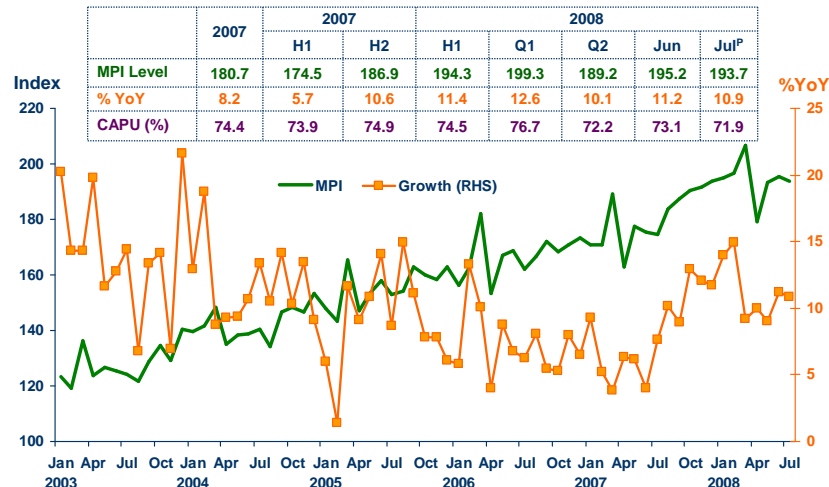
Farm Income from Major Crops

% YoY	2007	2007		2008				
		H1	H2	H1	Q1	Q2	Jun	Jul ^P
Farm Income	17.1	19.9	14.5	35.9	23.0	52.3	50.8	69.5
Production	1.6	1.7	1.5	13.6	7.0	22.9	21.6	21.9
Price	15.3	17.8	12.8	19.7	15.0	23.9	24.1	39.0

Source : Office of Agricultural Economics and Bank of Thailand

Sectoral Analysis Team Tel. 0-2283-5650

Manufacturing Production Index

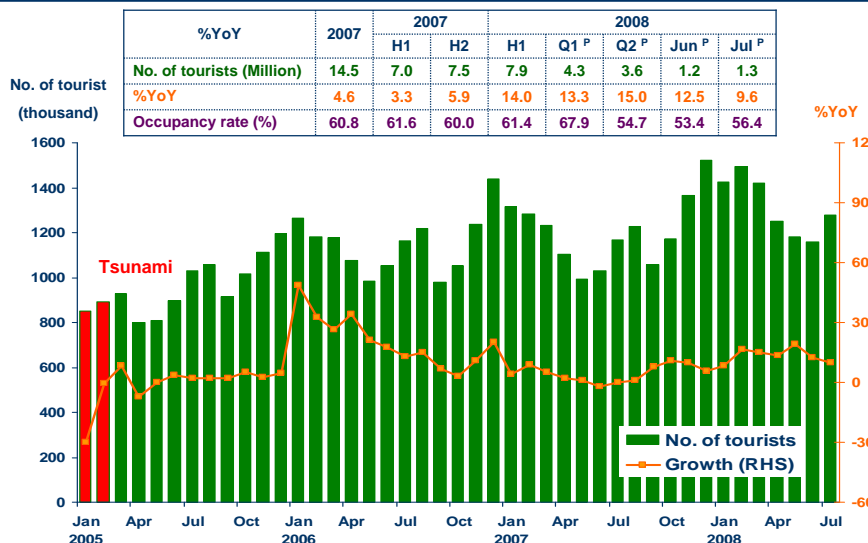


Source: BOT Survey

Note : MPI constructed by using 76 industry categories which represent 75.68% of V.A. in manufacturing sector
P = Preliminary (88.0% coverage)

Sectoral Analysis Team Tel. 0-2283-5650

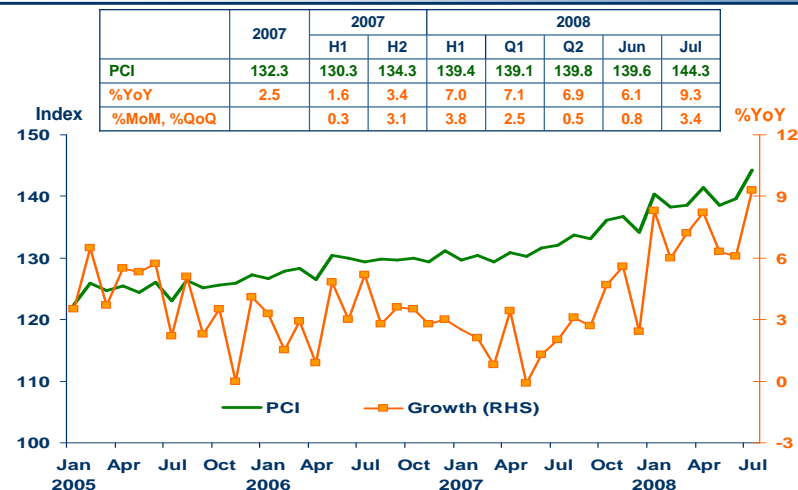
Tourism



Source : Tourism Authority of Thailand

BOP Analysis Team Tel. 0-2283-5636

Private Consumption Index 1/ (PCI) (Seasonally adjusted, 2000=100)



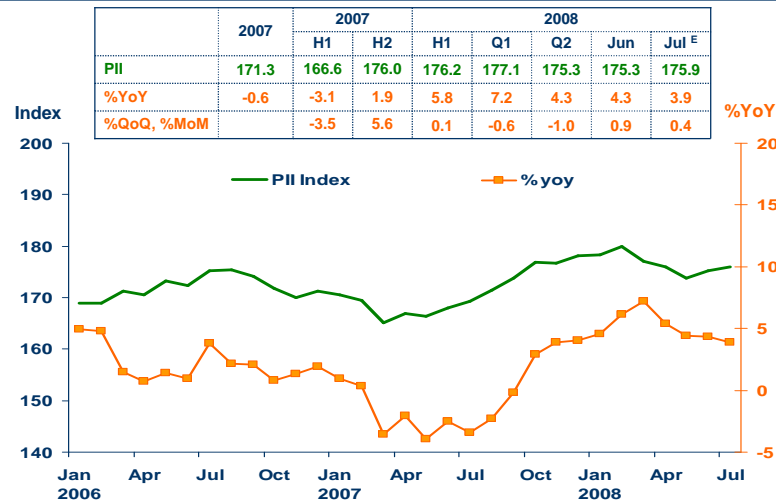
1/ The Bank of Thailand has revised the Private Consumption Index (PCI) series since January 2000 in order to better reflect private consumption expenditure. The revised index comprises 5 components from 10 indicators (6 indicators from the old series) and assigns weight for each component. For more information, please consult <http://www.bot.or.th/Thai/EconomicConditions/Thai/Index/DocLib/PCI-construction.pdf>

Source : Bank of Thailand

Macroeconomic Team Tel. 0-2283-5647

Private Investment Index (PII)

Seasonally adjusted, 3-month moving average(2000 = 100)



Note: PII series are rebased according to MOC import prices index. Hence, data from 2000 onwards are disseminated.
E = Estimated by assuming this month's data (seasonally-adjusted and moving average) equal to previous month's.
Source : Bank of Thailand

Macroeconomic Team Tel. 0-2283-5648

Government Revenue (by Collection Tax Base)

Total Revenue Jun = 133 Bn. (9.1%) Jul = 125 Bn. (12.6%)

%YoY	Share 2007	FY 07 ^P			FY 08 ^P				
		Total	H1	H2	Q1	Q2	Q3	Jun	Jul
1. Tax	88	4.9	5.9	4.2	6.7	9.3	12.1	3.7	14.4
1.1 Income Tax	38	7.0	5.1	7.8	11.8	11.4	15.1	-5.3	6.2
Personal	11	13.4	12.3	14.6	9.9	8.7	2.5	1.3	5.1
Corporate	23	2.7	-3.6	4.6	13.5	18.3	20.8	6.2	11.4
Petroleum	4	16.3	23.6	15.3	4.8	-2.2	10.9	-88.0	-99.2
1.2 Consumption Tax	44	4.6	8.8	0.7	4.1	8.0	8.6	8.1	17.7
VAT	25	3.9	5.6	2.4	10.2	15.7	15.8	16.0	33.3
Specific business	2	12.4	16.1	8.9	2.3	-11.4	-49.0	-53.8	-44.8
Excise	17	4.8	12.8	-2.8	-4.4	-1.0	4.2	3.8	0.9
1.3 Int'l Trade	5	-5.8	-9.1	-2.2	7.1	11.5	8.0	9.5	28.1
1.4 Other Taxes	1	-3.3	-19.3	16.8	9.4	14.6	5.6	10.7	-9.9
2. Non-tax	12	34.2	35.8	33.2	4.2	-12.5	6.8	47.6	-6.4
3.Total Revenue	100	7.7	8.7	7.0	6.4	7.0	11.5	9.1	12.6

Source: Fiscal Policy Office, Revenue Department

Public Finance Team Tel.0-2283-5628

Export Growth (in terms of US\$)

Jun 2008 = \$ 16.1 Bn (28.5%) Jul 2008 = \$ 16.8 Bn (43.9%)

%YoY	2007	2007		2008				
		H1	H2	H1	Q1	Q2	Jun	Jul
Agriculture	15.7	15.8	15.6	55.1	45.9	64.2	75.6	95.1
Fishery	11.0	17.9	5.6	3.2	-2.5	8.4	2.8	21.0
Manufacturing	18.8	18.4	19.2	22.5	20.7	24.2	25.8	41.1
Labor	18.9	5.1	31.9	37.5	35.5	39.6	47.9	71.9
High – tech	17.7	18.2	17.2	18.7	17.2	20.2	17.3	35.7
Resource	21.6	26.3	17.5	22.0	20.8	23.1	23.8	40.6
Total	17.3	16.7	17.8	24.7	22.9	26.3	28.5	43.9
Price	5.7	4.9	6.5	11.2	9.9	12.5	14.3	15.9
Quantity	11.0	11.3	10.6	12.1	11.8	12.3	12.4	24.2
Total (Excl.Gold)	16.6	16.8	16.3	23.5	22.0	24.9	25.3	40.2
Quantity (Excl.Gold)	10.3	11.4	9.2	11.0	11.0	11.0	9.6	21.0

Source: Constructed from data of Customs Department

BOP Analysis Team Tel. 0-2283 - 5636

Import Growth (in terms of US\$)

Jun 2008 = \$ 15.2 Bn (31.5%) Jul 2008 = \$ 17.5 Bn (53.4%)

%YoY	2007	2007		2008				
		H1	H2	H1	Q1	Q2	Jun	Jul
Consumer	13.8	8.5	18.7	34.9	37.3	32.6	38.7	42.0
Raw material	15.0	13.7	16.3	27.0	26.0	27.9	28.7	56.7
Capital :	5.1	3.0	7.0	25.0	35.0	16.2	23.6	39.9
Vehicles & parts	18.0	9.9	25.8	34.1	40.6	28.4	32.2	42.0
Oil	2.7	-3.5	8.5	59.0	68.5	51.2	67.8	97.3
Total	9.1	6.2	11.8	32.0	35.1	29.3	31.5	53.4
Price	5.4	3.4	7.3	16.7	15.6	17.7	19.4	19.1
Quantity	3.5	2.7	4.2	13.2	16.9	9.9	10.1	28.8

Source: Constructed from data of Customs Department

BOP Analysis Team Tel. 0-2283 - 5625

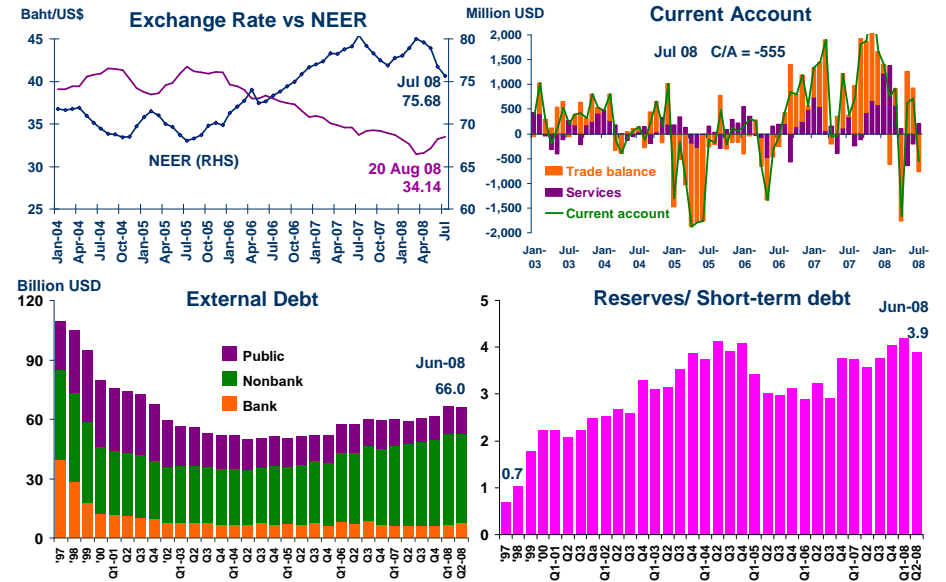
Balance of payments

Billion USD	2007	2007		2008				
		H1	H2	H1	Q1	Q2	Jun	Jul
Trade balance	11.6	4.1	7.5	0.3	-0.1	0.4	0.9	-0.8
Export	150.0	69.3	80.7	86.5	41.4	45.1	16.1	16.8
%YoY	17.3	16.7	17.8	24.7	22.9	26.3	28.5	43.9
Import	138.5	65.2	73.2	86.1	41.5	44.6	15.2	17.5
%YoY	9.1	6.2	11.8	32.0	35.1	29.3	31.5	53.4
Services & transfer	4.2	1.7	2.5	2.4	3.2	-0.7	-0.2	0.2
Current A/C	15.8	5.8	9.9	2.8	3.1	-0.3	0.7	-0.6
Net capital movement	-3.0	-2.0	-1.0	11.1	13.0	-2.0	-4.5	-1.8 ^E
Monetary authorities	-0.6	-0.8	0.1	0.3	0.6	-0.4	-0.2	0.1
Government	-2.2	-1.9	-0.3	0.6	0.4	0.2	-0.4	0.0
Bank	0.4	-6.1	6.4	7.3	7.1	0.2	-0.3	-0.2
Others	-0.6	6.8	-7.3	2.9	4.8	-1.9	-3.5	-1.7
Overall balance	17.1	5.7	11.4	16.0	18.5	-2.5	-3.8	-0.7
Reserves	87.5	73.0	87.5	105.7	110.0	105.7	105.7	104.8

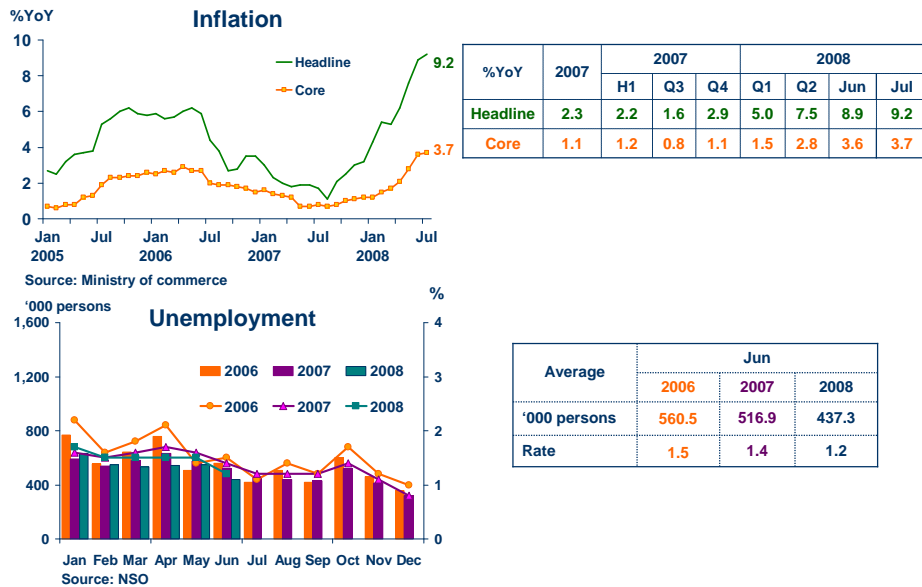
Source: Compiled by Bank of Thailand

BOP Analysis Team Tel. 0-2283-5636

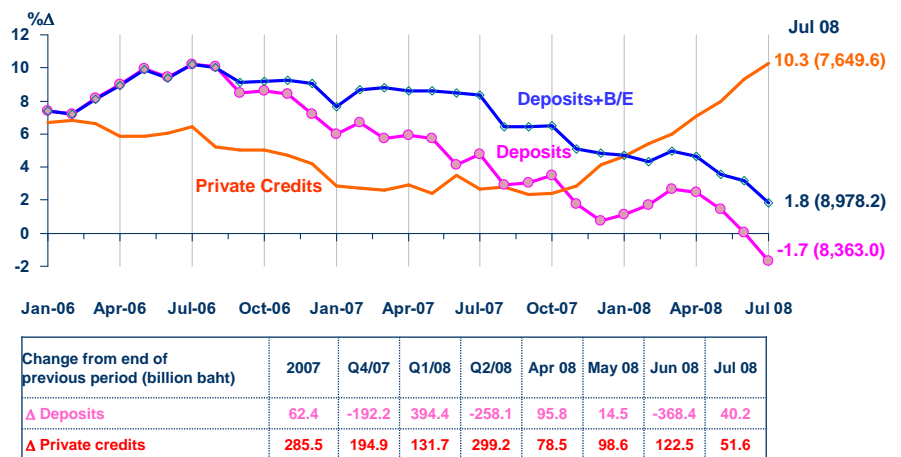
External Stability



Internal Stability



Depository Corporations* Deposits and Private Credits



Note: * Depository Corporations comprise Domestically Registered Commercial Banks, Branches of Foreign Banks, International Banking Facilities, Finance Companies, Specialized Banks, However, Thrift and Credit Cooperatives and Money Market Mutual Funds will be included when data of these institutions become available.

Source: Bank of Thailand